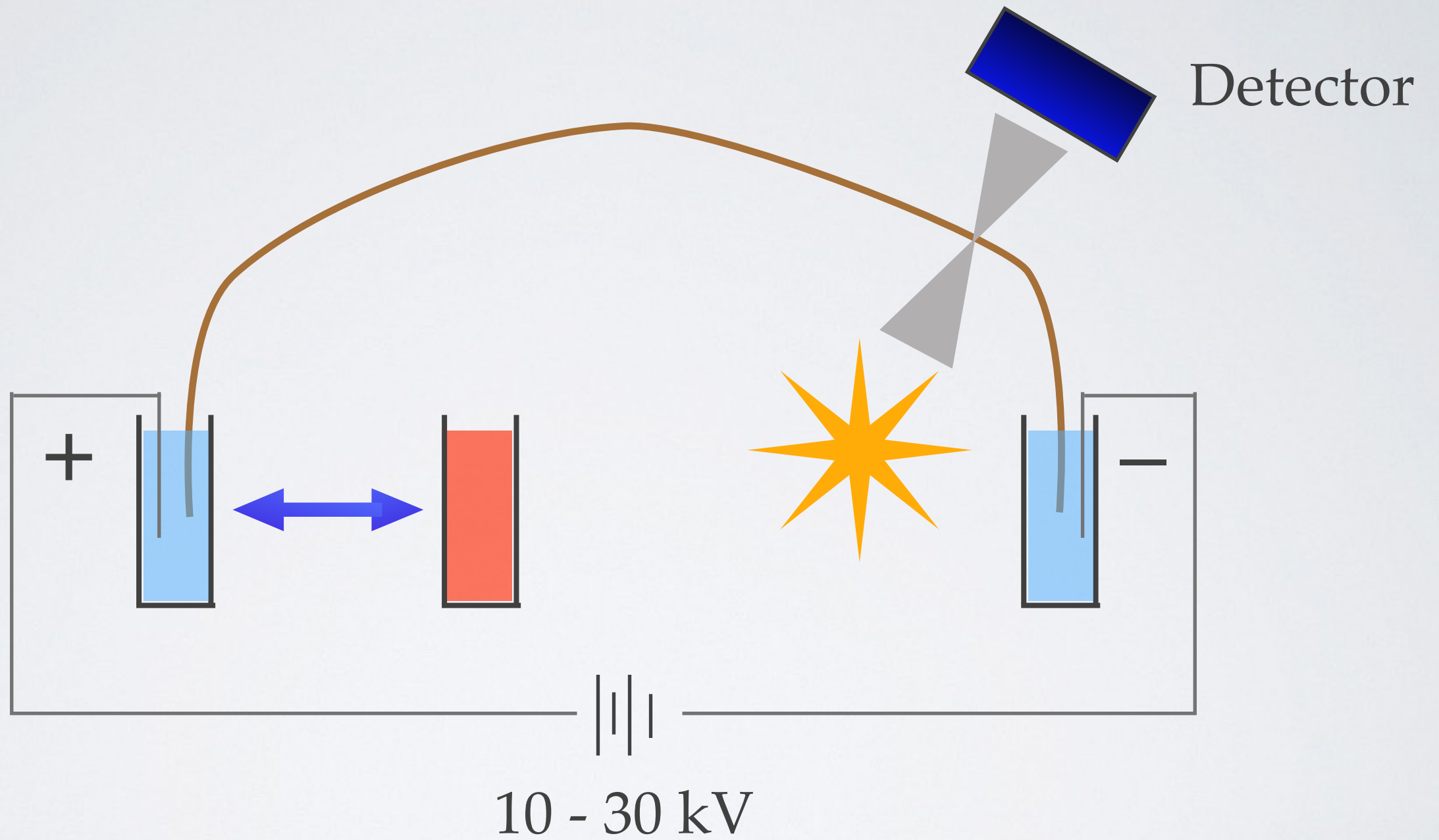


CAPILLARY ELECTROPHORESIS

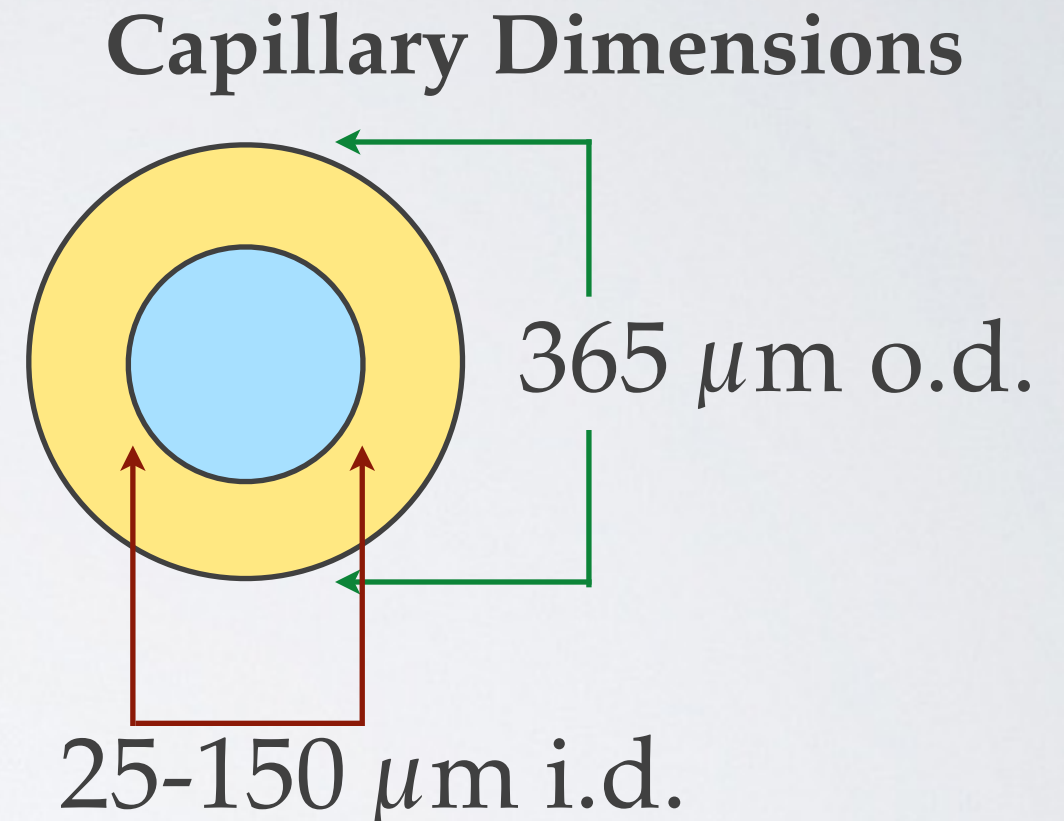
SDSU CHEM 251

CAPILLARY ELECTROPHORESIS



CAPILLARY ELECTROPHORESIS

- Capillary electrophoresis separates analytes on the basis of their **charge to size ratio**.
- There is typically no interaction between the analytes and the capillary (unlike LC and GC).
- Very fast separations of a wide range of analytes (e.g. ions, molecules, proteins, DNA, organelles...)



ELECTROPHORETIC SEPARATIONS

