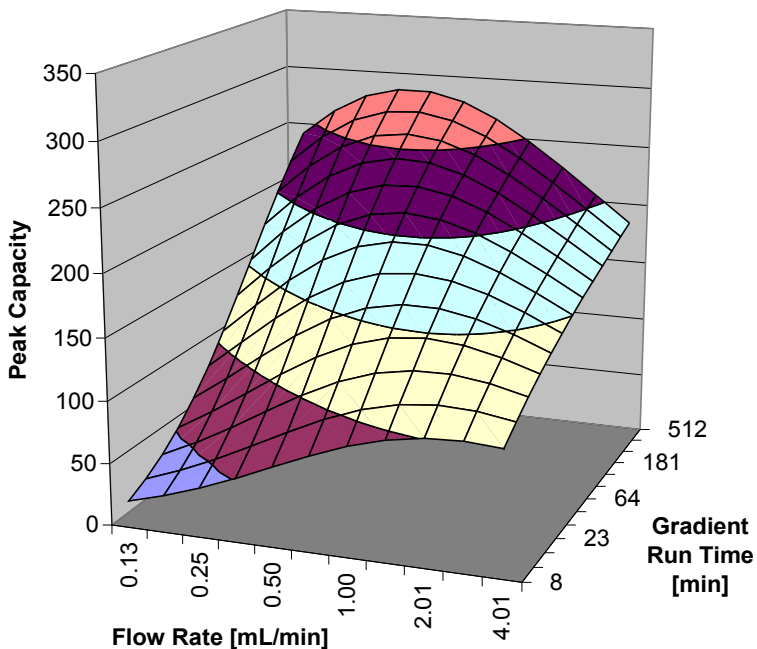


**Figure 4:**

Comparison of the peak capacity for a 15 cm 5  $\mu\text{m}$  column to a 10 cm 3.5  $\mu\text{m}$  column as a function of flow rate and gradient run time. (©Uwe Neue, WatersCorp)

**Column: 15 cm 3.9 mm 5  $\mu\text{m}$**



**Column: 10 cm 3.9 mm 3.5  $\mu\text{m}$**

